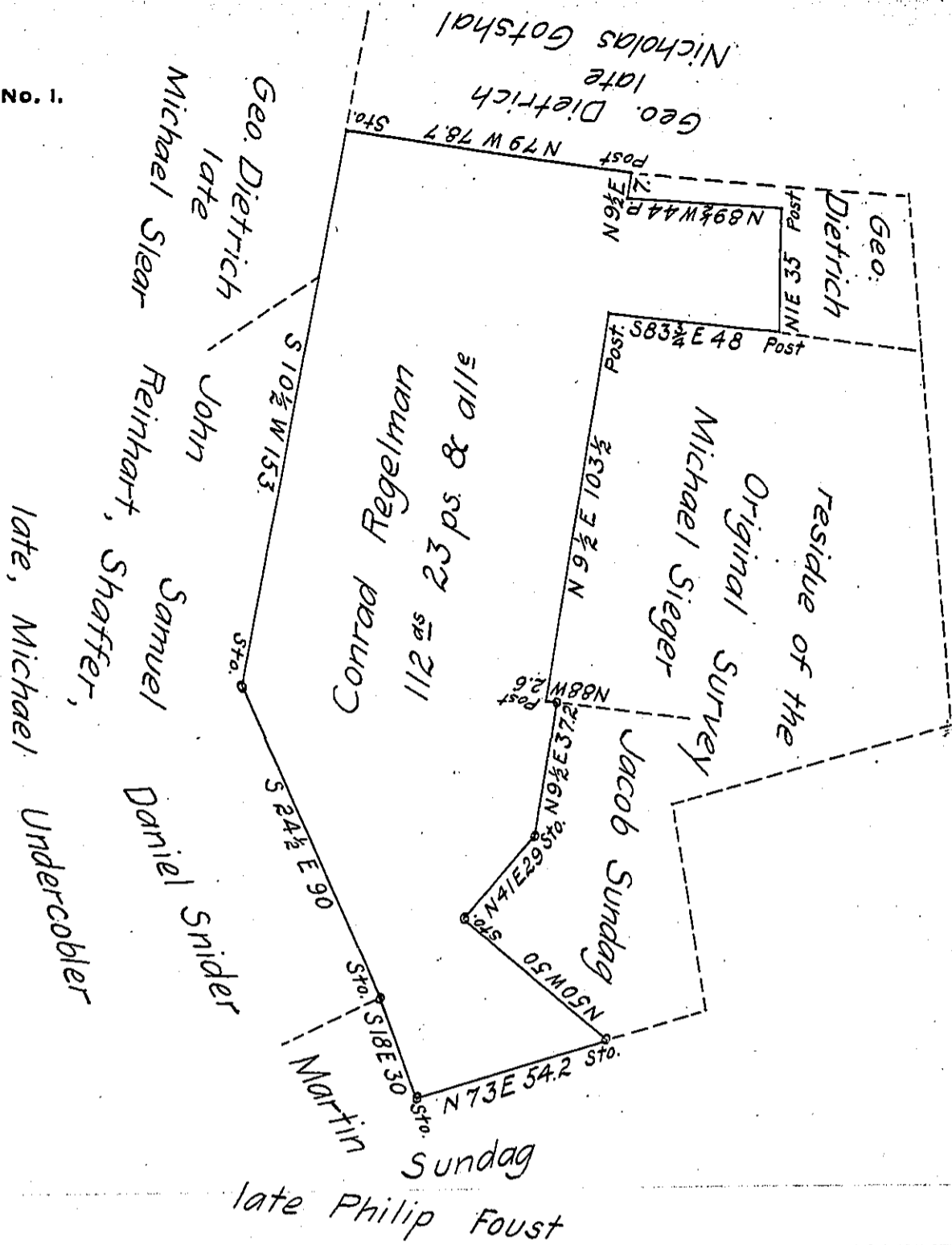


FORM No. 1.



Situate in Greenwich township, Berks County, contg
 One hundred and twelve acres, twenty three perches, and
 Allowance of 6 p^r Ct. part of A^s 204 & alle. Originally
 surveyed on a Warrant, dated the 4th day of December
 A.D. 1749, granted to Martin Regelman; the above part
 surveyed and laid down agreeably to present bearings and
 distance for Conrad Regelman. October 2^d 1830.

Matthias S. Richards D.S.

John Taylor; Esquire
 Surveyor General
 of Penn^a

IN TESTIMONY that the above is a copy of the original remaining on file in
 the Department of Internal Affairs of Pennsylvania, made
 conformably to an Act of Assembly approved the 16th day of
 February, 1833, I have hereunto set my Hand and caused
 the Seal of said Department to be affixed at Harrisburg,
 this fourteenth day of September 1906.

Isaac B. Brown
 Secretary of Internal Affairs.